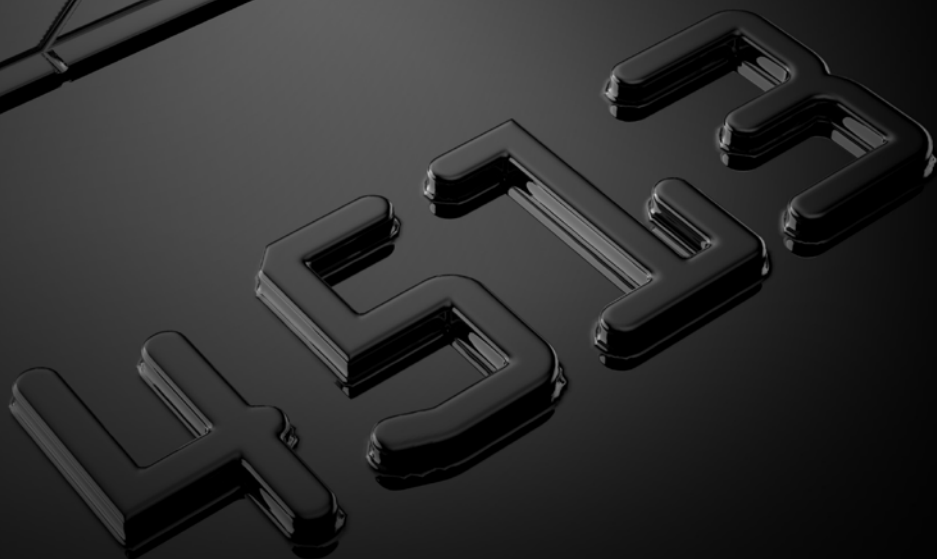
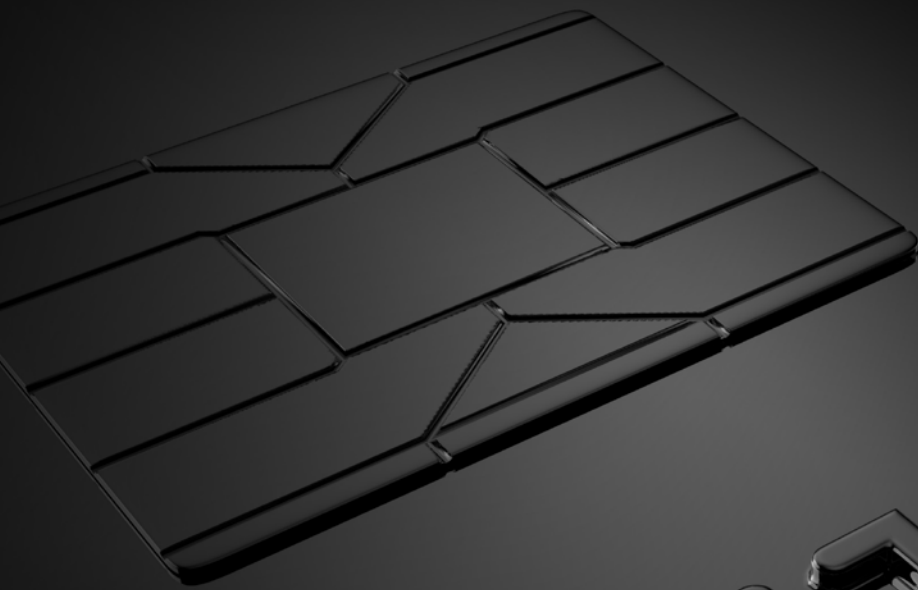


(expleo)

ISO 20022
Migration Simplified
Delivering Digital Payment Services



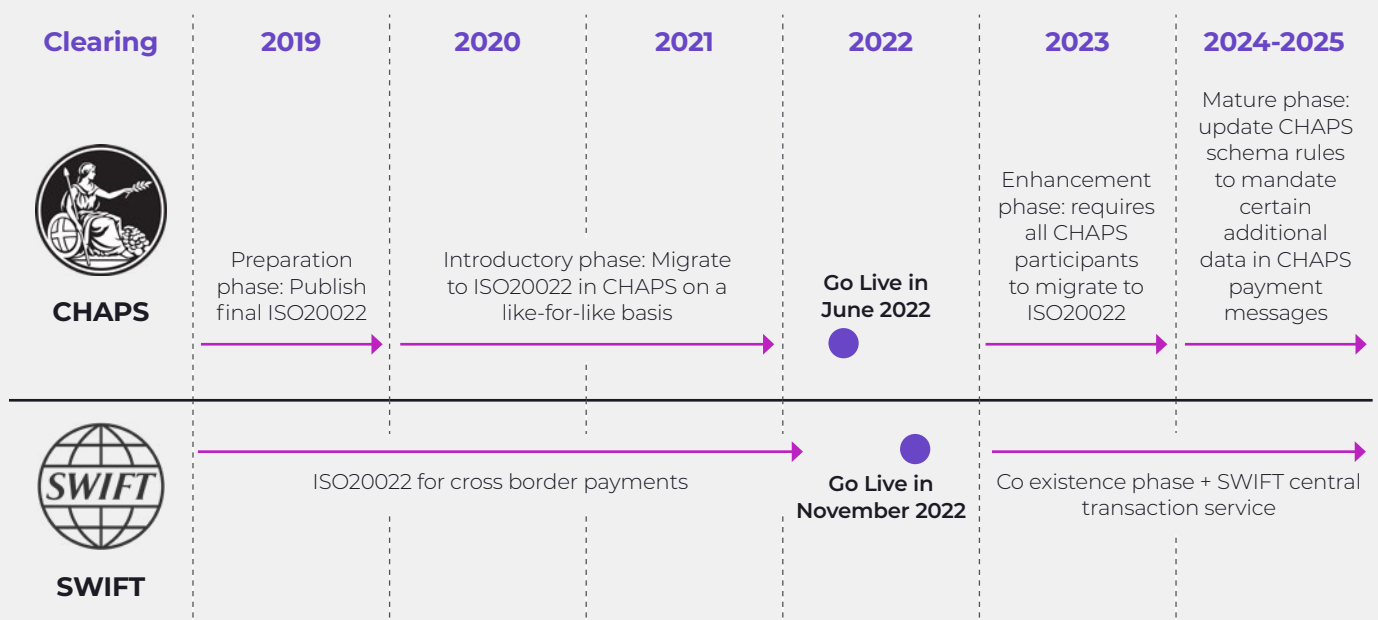
Expleo: a proven partner for ISO2002 delivery

Key services: Business consultancy, programme management and quality assurance

ISO20022 will create a common language for payments data across the globe, standardising a new data model that will yield efficiencies and improvements in customer experience. However, extensive change is required to achieve compliance.

The global migration of SWIFT messaging for correspondent banking will be completed by November 2025. ISO20022 will be widely implemented in the UK and the European Union ahead of this, when the Bank of England and the European Central Bank use ISO20022 to underpin the renewal of their real-time gross settlement (RTGS) systems.

Overview of ISO20022 timeline



To explore where and how Expleo might help you implement ISO20022 contact Bharath Kumar Mani, +44(0)7966163079, bharathkumar.mani@expleogroup.com and we will provide an initial 3-5 day consulting review at our cost.

What are the key considerations on the path to ISO20022?

For commercial banks meeting the new standard for real-time banking payments will demand holistic, interdepartmental change, which may be challenging without the right resources and expertise.

What is the most effective approach?

Is it “big bang”, or a two-phase strategy satisfying the regulatory requirements and then implementing fuller changes over a longer term?

What is the impact on existing systems?

To assess the impact of ISO20022 on the payments landscape, applications and architecture requires in-depth knowledge of the message structure and how to implement it. How well is this understood?

How available is specialist knowledge?

Maximising the increased data richness and interoperability of the ISO 20022 messaging standard requires an understanding of the various schemes to which these messaging standards are applicable, currently and in the future.

What is the governance required to support compliance?

Compliance relies on meeting strict requirements along a signposted itinerary. Are the right frameworks in place to support adherence to an agreed milestone plan?

How can the complexity be confidently covered?

The variability and data richness of ISO20022 brings complexity to the design of testing phases, test architecture requirements, and the test execution. How well equipped are current teams to meet this challenge?

How can Expleo help?

Ensuring successful execution

Drawing on experience assuring ISO20022 implementations for APAC and European clients, Expleo provides three principal services to help commercial banks successfully execute their ISO20022 payments-related change programmes.

1. Business Consultancy – Challenge the Programme

We can help shape the project, from budget to strategy. Taking a strategic approach to meeting your milestone plan, we will provide a comprehensive impact analysis covering both business process and technology. Why employ valuable internal resource to develop new skills and research the implications, when our people can work out immediately what ISO20022 means for your organisation?

2. Programme Management – End-to-End Delivery

Expleo can take responsibility for programme delivery, working collaboratively with you and your IT service providers – establishing the programme governance framework, developing plans and ensuring the programme has a basis for success. We can help manage the whole implementation, up to and beyond go-live.

3. Quality Assurance – Tried and Tested

To protect the bank and ensure everything works correctly, 30-40% of the programme will likely be testing and quality oriented. We will analyse the requirements and develop and execute a complete test approach that provides robust assurance of your updated systems and processes. Expleo’s frameworks, tools and accelerators across these three service lines will help ensure high quality system change and speed to market, whilst reducing the cost of implementation.

To explore where and how Expleo might help you implement ISO20022 contact **Bharath Kumar Mani, +44(0)7966163079, bharathkumar.mani@expleogroup.com** and we will provide an initial 3-5 day consulting review at our cost.



- Business Consultancy
- Programme Delivery
- Quality Assurance

Book a demo or schedule a meeting with our lead consultant.

Contact Bharath Kumar Mani, +44(0)7966163079,
bharathkumar.mani@expleogroup.com